

Jointing



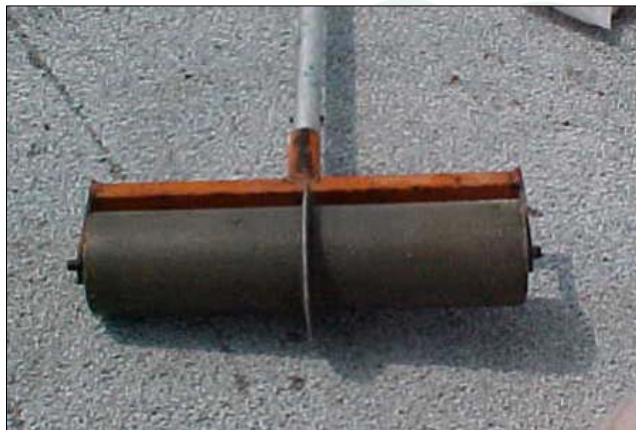
Why Joint?



Joints



Jointing Tool



**Joint to 1/4 of
the pavement
thickness**

Chalk Line for Jointing



Jointing Technique



Longitudinal Joints



Jointing Rules

- 15' on centers typical
- 20' on centers max.
- Square panels
- Cut in perpendicular to the curb
- Cut 1/4 the thickness



Jointing Details



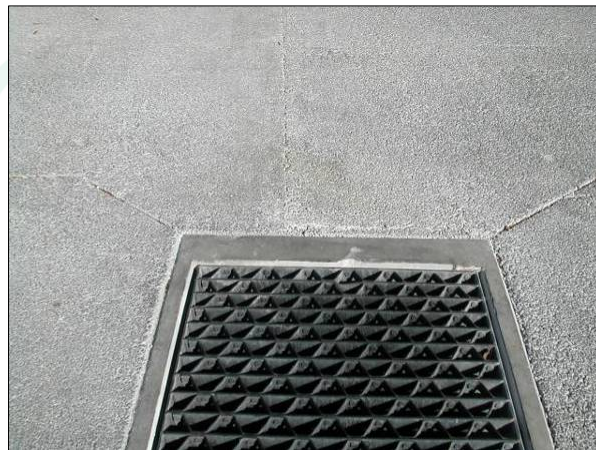
Match Existing Joints



Utilities



Jointing Into Inlets



Formed Joint



Isolation Joints

